

12 FUN TRENDS

KATY MAGAZINE'S EDITORS SHARE THEIR PICKS AND PREDICTIONS FOR FUN FASHION TRENDS THIS SEASON

1 **PLEATED SKIRTS**



Whether vintage or brand new, get ready to see a lot of pleats on skirts of every length this fall.

J. CREW

2 **DENIM JACKETS**



The preferred topper for skirts, slacks, or shorts this season, you'll see denim jackets with everything except jeans.

AEROPOSTALE

5 **CLASSIC PREP**



Say goodbye to your wrinkly, vintage-looking standards of last year and hello to more traditional preppy clothes in classic colors like pink, navy, and black.

RALPH LAUREN

6 **BOLDLY NEON**



Get ready to be blinded by neon this fall in the form of shoes, handbags, shirts, and sunglasses.

KATE SPADE

JOURNEYS

FLAPPER HATS

9



Reminiscent of the roaring '20s, the simple cloche is coming back with a new twist. You'll see them stylishly adorned with everything from feathers to hair clips.

FOREVER 21

FLORAL ACCENTS

10



No longer a spring thing, you'll see floral clips, headbands, and hair accessories in full bloom this fall.

KOHL'S

to Watch for Fall

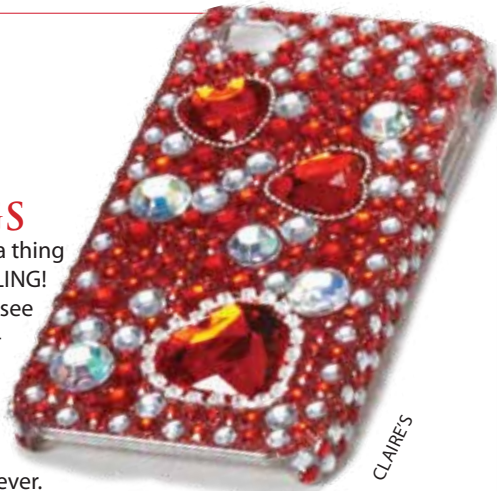
WHAT'S HOT THIS SEASON?

SPECIAL THANKS TO GENERAL GROWTH PROPERTIES (GGP) AND WILLOWBROOK MALL FOR PROVIDING PHOTOGRAPHY

3

BLING THINGS

It don't mean a thing if it ain't got BLING! This fall, you'll see even more bejeweled handbags, hair accessories, and school supplies than ever.



CLAIRE'S

4

SHOE EMBELLISHMENTS

Be on the lookout for unique shoe adornments such as feathers, studs, jewels, clips, or other unique features.



JIMMY CHOO

7

RETRO RAINBOW

Make it multi-colored! Look for rainbow-themed clothes, jewelry, and accessories to go mainstream this season.



DILLARD'S

8

COLORLED JEANS

Skinny, peg leg, and slim-fit ankle pants will continue to make their way through Katy in bright colors like turquoise, orange, purple, and hot pink.



GAP

11

BIG, SOLID TOTES

Bright-colored, king-sized handbags, big enough to hold makeup, gym clothes, and more, are making their way around Katy this fall. Hot colors include Tiffany blue and any neon shade.



JCP



EXPRESS

12

SHINY & CHUNKY

Because of their ability to go with any outfit for any occasion, get ready to see big, chunky bracelets in brushed metal, shiny metal, mixed metals, and more.